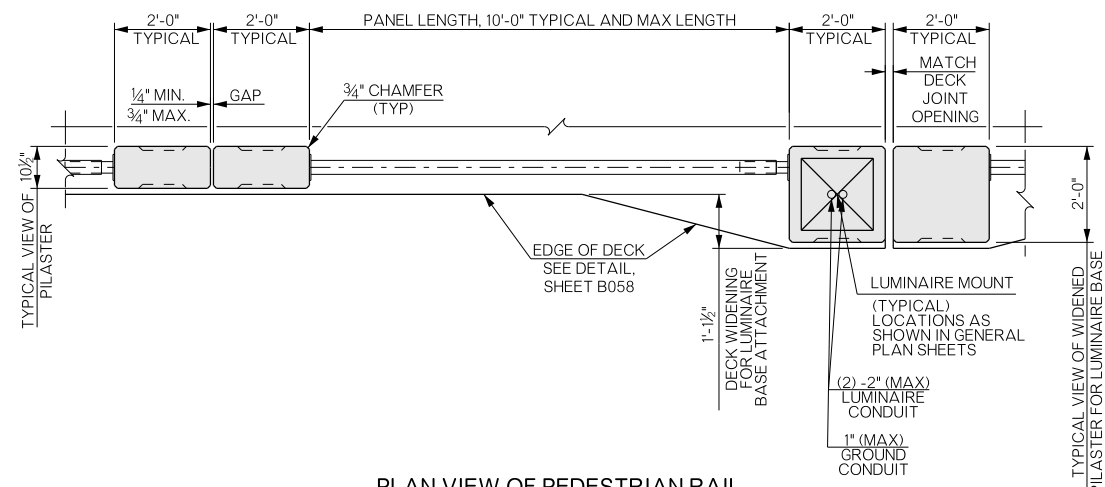
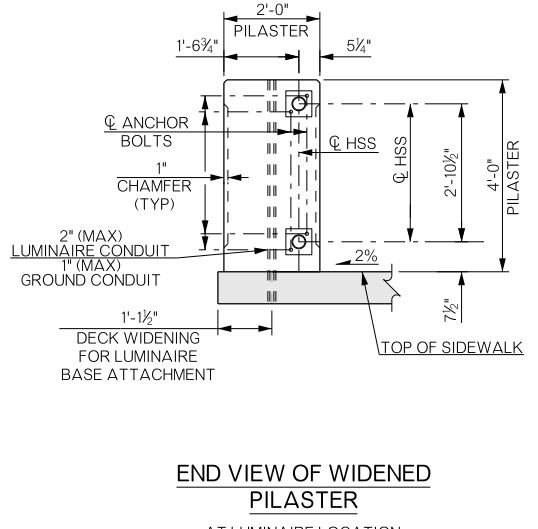


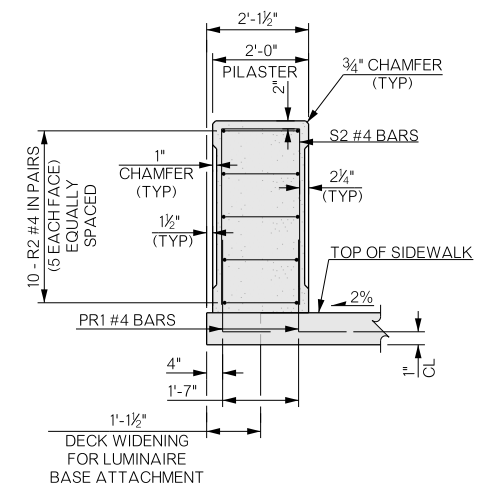
REVISIONS		
REV. NO.	DESCRIPTION	DATE



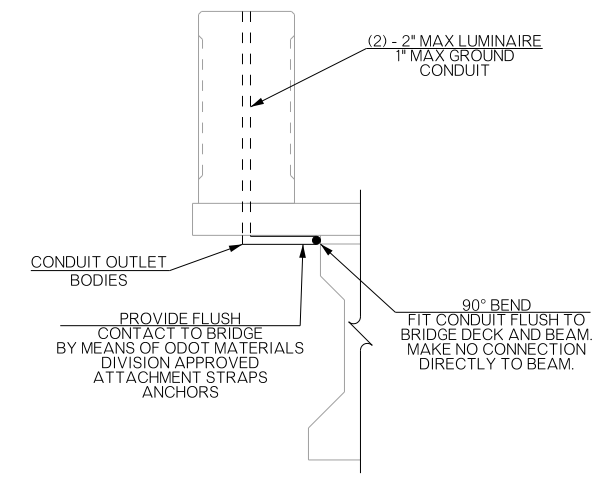
PLAN VIEW OF PEDESTRIAN RAIL



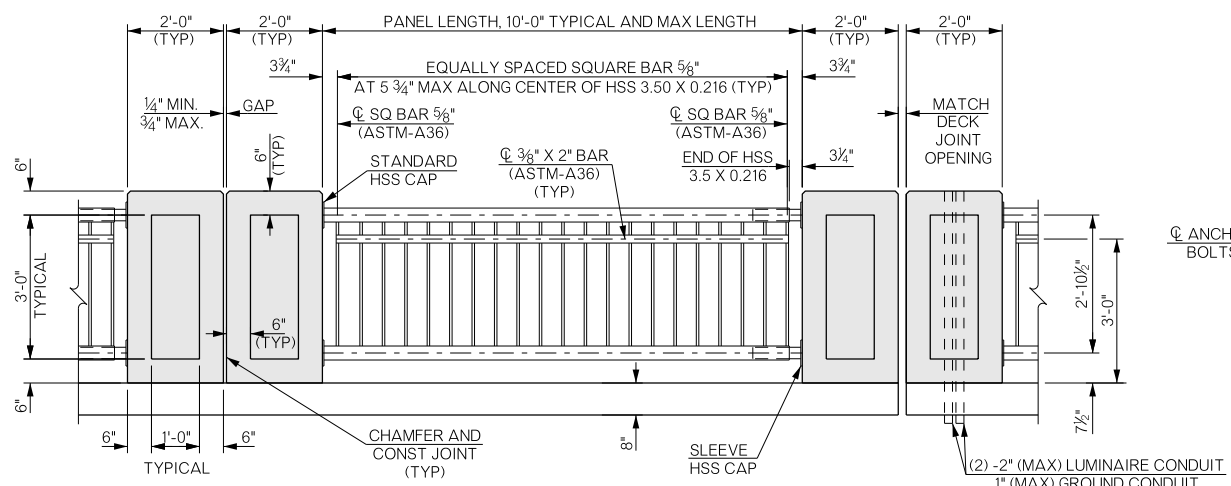
END VIEW OF WIDENED PILASTER AT LUMINAIRE LOCATION
SQ BAR 5/8" NOT SHOWN



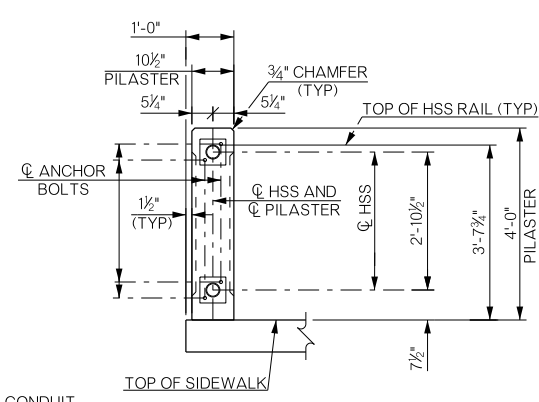
TYPICAL SECTION OF WIDENED PILASTER FOR LUMINAIRE BASE



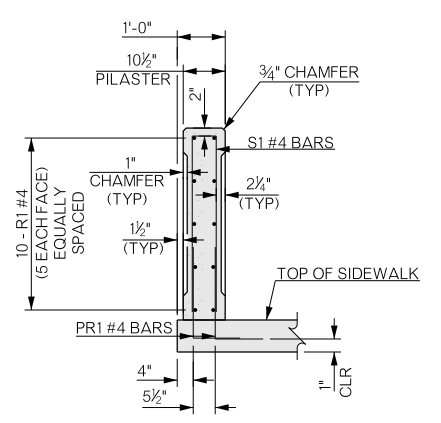
DETAIL OF ELECTRICAL CONDUIT AT LUMINAIRE MOUNTS



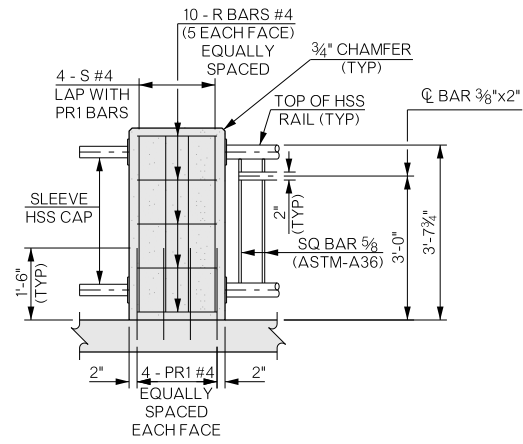
ELEVATION OF PEDESTRIAN RAIL



END VIEW OF PILASTER
SQ BAR 5/8" NOT SHOWN



TYPICAL SECTION OF PILASTER



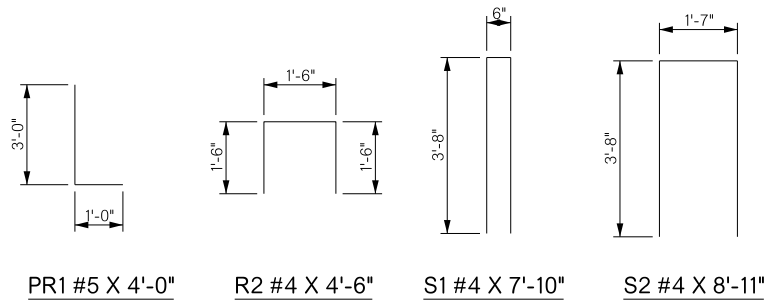
HSS RAIL AND PILASTER SECTION

NOTES:

ELECTRICAL CONDUIT NOTES:

PROVIDE RIGID METALLIC ELECTRICAL CONDUIT IN ACCORDANCE WITH SECTION 709 OF THE STANDARD SPECIFICATIONS. CONDUIT SHALL FIT FLUSH TO SOFFIT AND TOP FLANGE OF P.C. BEAMS SUCH THAT THERE IS MINIMAL GAP BETWEEN CONDUIT AND CONCRETE BY ATTACHMENT CONNECTION APPROVED BY ODOT BRIDGE DIVISION. CONDUIT OUTLET BODIES SHALL BE METALLIC, LB BODY STYLED AND THREADED. UNDER NO CIRCUMSTANCES SHALL ANY CONDUIT ATTACHMENT BE MADE TO THE P.C. BEAMS. ADJUST SPACING OF REINFORCING IN PILASTER AND BRIDGE DECK AS NECESSARY TO ALLOW FOR PASSAGE OF CONDUIT WHILE MAINTAINING CLEAR COVER. UNDER NO CIRCUMSTANCES SHALL ANY REINFORCING BE OMITTED OR CUT TO ALLOW FOR PASSAGE OF CONDUIT THROUGH CONCRETE MEMBERS. AT EXPANSION JOINT LOCATIONS, ELECTRICAL CONDUIT SHALL BE CONSTRUCTED TO ALLOW FOR MOVEMENT DUE TO THERMAL FORCES. THE COST OF ELECTRICAL CONDUIT, JUNCTION BOXES, OUTLET BODIES, ATTACHMENTS AND FITTINGS SHALL BE CONSIDERED SUBSIDIARY TO OTHER ITEMS OF WORK.

SEE TRAFFIC LIGHTING STD. BMF3-2-00 FOR FURTHER DETAILS OF LUMINAIRE MOUNT.



BRIDGE "A" SH-33 OVER COTTONWOOD CREEK	LOGAN COUNTY	Design	GT	11/15
DETAILS OF PEDESTRIAN RAIL (SHEET 1 OF 2)		Detail	TIS	2/16
		Check	TT	7/16
STATE OF OKLAHOMA		DEPARTMENT OF TRANSPORTATION		Sheet No. B071